

## HIGHLIGHTS OF PRESCRIBING INFORMATION

These highlights do not include all the information needed to use **ABIRATERONE ACETATE TABLETS** safely and effectively. See full prescribing information for **ABIRATERONE ACETATE TABLETS**.

### ABIRATERONE ACETATE tablets, for oral use

Initial U.S. Approval: 2011

#### RECENT MAJOR CHANGES

Warnings and Precautions (5.1)	06/2019
Warnings and Precautions (5.4)	06/2019
Warnings and Precautions (5.5)	06/2019

#### INDICATIONS AND USAGE

Abiraterone acetate tablets are a CYP17 inhibitor indicated in combination with prednisone for the treatment of patients with • metastatic castration-resistant prostate cancer (CRPC). (1)

#### DOSE AND ADMINISTRATION

Metastatic castration-resistant prostate cancer:

- Abiraterone acetate tablets 1000 mg orally once daily with prednisone 5 mg orally twice daily. (2.1)

Patients receiving abiraterone acetate tablets should also receive a gonadotropin-releasing hormone (GnRH) analog concurrently or should have had bilateral orchiectomy. Abiraterone acetate tablets must be taken on an empty stomach with water at least 1 hour before or 2 hours after a meal. Do not crush or chew tablets. (2.3)

#### Dose Modification:

- For patients with baseline moderate hepatic impairment (Child-Pugh Class B), reduce the abiraterone acetate tablets starting dose to 250 mg once daily. (2.4)
- For patients who develop hepatotoxicity during treatment, hold abiraterone acetate tablets until recovery. Retreatment may be initiated at a reduced dose. Abiraterone acetate tablets should be discontinued if patients develop severe hepatotoxicity. (2.4)

#### DOSE FORMS AND STRENGTHS

Film-Coated Tablet 250 mg (3)

#### CONTRAINDICATIONS

None

#### WARNINGS AND PRECAUTIONS

- Mineralocorticoid excess: Closely monitor patients with cardiovascular disease. Control hypertension and correct hypokalemia before treatment. Monitor blood pressure, serum potassium and symptoms of fluid retention at least monthly. (5.1)

## FULL PRESCRIBING INFORMATION: CONTENTS\*

- INDICATIONS AND USAGE
- DOSE AND ADMINISTRATION
  - Recommended Dose for Metastatic CRPC
  - Important Administration Instructions
  - Dose Modification Guidelines in Hepatic Impairment and Hepatotoxicity
  - Dose Modification Guidelines for Strong CYP3A4 Inducers
- DOSE FORMS AND STRENGTHS
- CONTRAINDICATIONS
- WARNINGS AND PRECAUTIONS
  - Hypokalemia, Fluid Retention, and Cardiovascular Adverse Reactions due to Mineralocorticoid Excess
  - Adrenocortical Insufficiency
  - Hepatotoxicity
  - Increased Fractures and Mortality in Combination with Radium Ra 223 Dichloride
  - Embryo-Fetal Toxicity
- ADVERSE REACTIONS
  - Clinical Trial Experience
  - Postmarketing Experience
- DRUG INTERACTIONS
  - Drugs that Inhibit or Induce CYP3A4 Enzymes
  - Effects of Abiraterone on Drug Metabolizing Enzymes

## FULL PRESCRIBING INFORMATION

- INDICATIONS AND USAGE  
Abiraterone acetate tablets are indicated in combination with prednisone for the treatment of patients with • Metastatic castration-resistant prostate cancer (CRPC)
- DOSE AND ADMINISTRATION
  - Recommended Dose for Metastatic CRPC  
The recommended dose of abiraterone acetate tablets is 1,000 mg (four 250 mg tablets) orally once daily with prednisone 5 mg orally **twice** daily.
  - Important Administration Instructions  
Patients receiving abiraterone acetate tablets should also receive a gonadotropin-releasing hormone (GnRH) analog concurrently or should have had bilateral orchiectomy. Abiraterone acetate tablets must be taken on an empty stomach, at least one hour before or at least two hours after a meal. *[See Clinical Pharmacology (12.2)].* The tablets should be swallowed whole with water. Do not crush or chew tablets.
  - Dose Modification Guidelines in Hepatic Impairment and Hepatotoxicity  
Hepatic Impairment  
In patients with baseline moderate hepatic impairment (Child-Pugh Class B), reduce the recommended dose of abiraterone acetate tablets to 250 mg once daily. In patients with moderate hepatic impairment monitor ALT, AST, and bilirubin prior to the start of treatment, every week for the first month, every two weeks for the following two months and monthly thereafter. If elevations in ALT and/or AST greater than 5X upper limit of normal (ULN) or total bilirubin greater than 3X ULN occur in patients with baseline moderate hepatic impairment, discontinue abiraterone acetate tablets and do not re-treat patients with abiraterone acetate tablets *[see Use in Specific Populations (8.6) and Clinical Pharmacology (12.3)]*. Do not use abiraterone acetate tablets in patients with baseline severe hepatic impairment (Child-Pugh Class C).  
Hepatotoxicity  
For patients who develop hepatotoxicity during treatment with abiraterone acetate tablets (ALT and/or AST greater than 5X ULN or total bilirubin greater than 3X ULN), interrupt treatment with abiraterone acetate tablets *[see Warnings and Precautions (5.3)]*. Treatment may be restarted at a reduced dose of 750 mg once daily following return of liver function tests to the patient's baseline or to AST and ALT less than or equal to 2.5X ULN and total bilirubin less than or equal to 1.5X ULN. For patients who resume treatment, monitor serum transaminases and bilirubin at a minimum of every two weeks for three months and monthly thereafter. If hepatotoxicity recurs at the dose of 750 mg once daily, re-treatment may be restarted at a reduced dose of 500 mg once daily following return of liver function tests to the patient's baseline or to AST and ALT less than or equal to 2.5X ULN and total bilirubin less than or equal to 1.5X ULN.
  - Dose Modification Guidelines for Strong CYP3A4 Inducers  
Avoid concomitant strong CYP3A4 inducers (e.g., phenytoin, carbamazepine, rifampin, rifabutin, rifampin, phenobarbital) during abiraterone acetate tablets treatment.
  - For strong CYP3A4 inducers must be co-administered, increase the abiraterone acetate tablets dosing frequency to twice a day only during the co-administration period (e.g., from 1,000 mg once daily to 1,000 mg twice a day). Reduce the dose back to the previous dose and frequency, if the concomitant strong CYP3A4 inducer is discontinued *[see Drug Interactions (7.1) and Clinical Pharmacology (12.3)]*.
- DOSE FORMS AND STRENGTHS  
Abiraterone acetate tablets USP, 250 mg are white to off-white, oval shaped, film coated tablets debossed with "35" on one side and plain on other side.
- CONTRAINDICATIONS  
None.
- WARNINGS AND PRECAUTIONS
  - Hypokalemia, Fluid Retention, and Cardiovascular Adverse Reactions due to Mineralocorticoid Excess  
Abiraterone acetate may cause hypertension, hypokalemia, and fluid retention as a consequence of increased mineralocorticoid levels resulting from CYP17 inhibition *[see Clinical Pharmacology (12.1)]*. Monitor patients for hypertension, hypokalemia, and fluid retention at least once a month. Control hypertension and correct hypokalemia before and during treatment with abiraterone acetate.  
In the combined data from 4 placebo-controlled trials using prednisone 5 mg twice daily in combination with 1,000 mg abiraterone acetate daily, grades 3 to 4 hypokalemia were detected in 4% of patients on the abiraterone acetate arm and 2% of patients on the placebo arm. Grades 3 to 4 hypertension were observed in 2% of patients each arm and grades 3 to 4 fluid retention in 1% of patients each arm.  
Closely monitor patients whose underlying medical conditions might be compromised by increases in blood pressure, hypokalemia or fluid retention, such as those with heart failure, recent myocardial infarction, atrial fibrillation, supraventricular tachycardia, or ventricular tachycardia. In postmarketing experience, QT prolongation and Torsades de Pointes have been observed in patients who develop hypokalemia while taking abiraterone acetate. The safety of abiraterone acetate in patients with left ventricular ejection fraction <50% or New York Heart Association (NYHA) Class III or IV heart failure (in COU-AA-301) or NYHA Class II to IV heart failure (in COU-AA-302) has not been established because these patients were excluded from these randomized clinical trials *[see Clinical Studies (14)]*.
  - Adrenocortical Insufficiency  
Adrenal insufficiency occurred in 0.3% of 2,230 patients taking abiraterone acetate and in 0.1% of 1,763 patients taking placebo in the combined data of randomized, placebo-controlled clinical studies. Adrenocortical insufficiency was reported in patients receiving abiraterone acetate in combination with prednisone, following interruption of daily steroids and/or with concurrent infection or stress.  
Monitor patients for symptoms and signs of adrenocortical insufficiency, particularly if patients are withdrawn from prednisone, have prednisone dose reductions, or experience unusual stress. Symptoms and signs of adrenocortical insufficiency may be masked by adverse reactions associated with mineralocorticoid excess seen in patients treated with abiraterone acetate. If clinically indicated, perform appropriate tests to confirm the diagnosis of adrenocortical insufficiency. Increased dosage of corticosteroids may be indicated before, during and after stressful situations *[see Warnings and Precautions (5.1)]*.

- Adrenocortical insufficiency: Monitor for symptoms and signs of adrenocortical insufficiency. Increased dosage of corticosteroids may be indicated before, during and after stressful situations. (5.2)

- Hepatotoxicity: Can be severe and fatal. Monitor liver function and modify, interrupt, or discontinue abiraterone acetate dosing as recommended. (5.3)

- Increased fractures and mortality in combination with radium Ra 223 dichloride: Use of abiraterone acetate plus prednisone/prednisolone in combination with radium Ra 223 dichloride is not recommended. (5.4)

- Embryo-Fetal Toxicity: Abiraterone acetate can cause fetal harm. Advise males with female partners of reproductive potential to use effective contraception. (5.5, 8.1, 8.3)

#### ADVERSE REACTIONS

The most common adverse reactions (≥10%) are fatigue, arthralgia, hypertension, nausea, edema, hypokalemia, hot flush, diarrhea, vomiting, upper respiratory infection, cough, and headache. (6.1)

The most common laboratory abnormalities (>20%) are anemia, elevated alkaline phosphatase, hypertriglyceridemia, lymphopenia, hypercholesterolemia, hyperglycemia, and hypokalemia. (6.1)

To report SUSPECTED ADVERSE REACTIONS, contact Dr. Reddy's Laboratories Inc., at 1-888-375-3784 or 1-800-FDA-1088 or [www.fda.gov/medwatch](http://www.fda.gov/medwatch).

#### DRUG INTERACTIONS

- CYP3A4 Inducers: Avoid concomitant strong CYP3A4 inducers during abiraterone acetate treatment. If a strong CYP3A4 inducer must be co-administered, increase the abiraterone acetate dosing frequency. (2.5, 7.1)
- CYP2D6 Substrates: Avoid co-administration of abiraterone acetate with CYP2D6 substrates that have a narrow therapeutic index. If an alternative treatment cannot be used, exercise caution and consider a dose reduction of the concomitant CYP2D6 substrate. (7.2)

#### USE IN SPECIFIC POPULATIONS

- Do not use abiraterone acetate tablets in patients with baseline severe hepatic impairment (Child-Pugh Class C). (6.6)

See 17 for PATIENT COUNSELING INFORMATION and FDA-approved patient labeling.

Revised: 09/2019

## 8 USE IN SPECIFIC POPULATIONS

- Pregnancy
- Lactation
- Females and Males of Reproductive Potential
- Pediatric Use
- Geriatric Use
- Patients with Hepatic Impairment
- Patients with Renal Impairment

## 10 OVERDOSAGE

## 11 DESCRIPTION

## 12 CLINICAL PHARMACOLOGY

- Mechanism of Action
- Pharmacodynamics
- Pharmacokinetics

## 13 NONCLINICAL TOXICOLOGY

- Carcinogenesis, Mutagenesis, and Impairment of Fertility
- Animal Toxicology and/or Pharmacology

## 14 CLINICAL STUDIES

## 16 HOW SUPPLIED/STORAGE AND HANDLING

## 17 PATIENT COUNSELING INFORMATION

\*Sections or subsections omitted from the full prescribing information are not listed.

## 5.3 Hepatotoxicity

In postmarketing experience, there have been abiraterone acetate-associated severe hepatic toxicity, including fulminant hepatitis, acute liver failure and deaths *[see Adverse Reactions (6.2)]*.

In the combined data of randomized clinical trials, grade 3 to 4 ALT or AST increases (at least 5X ULN) were reported in 6% of 2,230 patients who received abiraterone acetate, typically during the first 3 months after starting treatment. Patients whose baseline ALT or AST were elevated were more likely to experience liver test elevation than those beginning with normal values. Treatment discontinuation due to ALT and AST increases or abnormal hepatic function occurred in 11% of 2,230 patients taking abiraterone acetate. In these clinical trials, no deaths clearly related to abiraterone acetate were reported due to hepatotoxicity events.

Measure serum transaminases (ALT and AST) and bilirubin levels prior to starting treatment with abiraterone acetate, every two weeks for the first three months of treatment and monthly thereafter. In patients with baseline moderate hepatic impairment receiving a reduced abiraterone acetate dose of 250 mg, measure ALT, AST, and bilirubin prior to the start of treatment, every week for the first month, every two weeks for the following two months of treatment and monthly thereafter. Promptly measure serum total bilirubin, AST, and ALT if clinical symptoms or signs suggestive of hepatotoxicity develop. Elevations of AST, ALT, or bilirubin from the patient's baseline should prompt more frequent monitoring. If at any time AST or ALT rise above five times the ULN, or the bilirubin rises above three times the ULN, interrupt abiraterone acetate treatment and closely monitor liver function.

Re-treatment with abiraterone acetate at a reduced dose level may take place only after return of liver function tests to the patient's baseline or to AST and ALT less than or equal to 2.5X ULN and total bilirubin less than or equal to 1.5X ULN *[see Dosage and Administration (2.4)]*.

Permanently discontinue abiraterone acetate for patients who develop a concurrent elevation of ALT greater than 3 x ULN and total bilirubin greater than 2 x ULN in the absence of biliary obstruction or other cause responsible for the concurrent elevation *[see Dosage and Administration (2.4)]*.

The safety of abiraterone acetate re-treatment of patients who develop AST or ALT greater than or equal to 20X ULN and/or bilirubin greater than or equal to 10X ULN is unknown.

#### 5.4 Increased Fractures and Mortality in Combination with Radium Ra 223 Dichloride

Abiraterone acetate plus prednisone/prednisolone is not recommended for use in combination with radium 223 dichloride outside of clinical trials. The clinical efficacy and safety of concurrent initiation of abiraterone acetate plus prednisone/prednisolone and radium Ra 223 dichloride was assessed in a randomized, placebo-controlled multicenter study (ERA-223 trial) in 806 patients with asymptomatic or mildly symptomatic castration-resistant prostate cancer with bone metastases. The study was unblinded early based on an Independent Data Monitoring Committee recommendation.

At the primary analysis, increased incidences of fractures (28.6% vs 11.4%) and deaths (38.5% vs 35.5%) have been observed in patients who received abiraterone acetate plus prednisone/prednisolone in combination with radium Ra 223 dichloride compared to patients who received placebo in combination with abiraterone acetate plus prednisone/prednisolone.

#### 5.5 Embryo-Fetal Toxicity

The safety and efficacy of abiraterone acetate have not been established in females. Based on animal reproductive studies and mechanism of action, abiraterone acetate can cause fetal harm and loss of pregnancy when administered to a pregnant female. In animal reproduction studies, oral administration of abiraterone acetate to pregnant rats during organogenesis caused adverse developmental effects at maternal exposures approximately x 0.03 times the human exposure (AUC) at the recommended dose. Advise males with female partners of reproductive potential to use effective contraception during treatment with abiraterone acetate and for 3 weeks after the last dose of abiraterone acetate *[see Use in Specific Populations (8.1, 8.3)]*. Abiraterone acetate should not be handled by females who are or may become pregnant *[see How Supplied/Storage and Handling (16)]*.

## 6 ADVERSE REACTIONS

The following are discussed in more detail in other sections of the labeling:

- Hypokalemia, Fluid Retention, and Cardiovascular Adverse Reactions due to Mineralocorticoid Excess *[see Warnings and Precautions (5.1)]*.
- Adrenocortical Insufficiency *[see Warnings and Precautions (5.2)]*.
- Hepatotoxicity *[see Warnings and Precautions (5.3)]*.
- Increased Fractures and Mortality in Combination with Radium Ra 223 Dichloride *[see Warnings and Precautions (5.4)]*.

#### 6.1 Clinical Trial Experience

Because clinical trials are conducted under widely varying conditions, adverse reaction rates observed in the clinical trials of a drug cannot be directly compared to rates in the clinical trials of another drug and may not reflect the rates observed in clinical practice.

Two randomized placebo-controlled, multicenter clinical trials (COU-AA-301 and COU-AA302) enrolled patients who had metastatic CRPC in which abiraterone acetate was administered orally at a dose of 1,000 mg twice daily in combination with prednisone 5 mg twice daily in the active treatment arms. Placebo plus prednisone 5 mg twice daily was given to patients on the control arm. Another randomized placebo-controlled, multicenter clinical trial enrolled patients who had another indication in which abiraterone acetate was administered in combination with prednisone. Placebos were administered to patients in the control arm. Additionally, two other randomized, placebo-controlled trials were conducted in patients with metastatic CRPC. The safety data pooled from 2,230 patients in randomized controlled trials constitute the basis for the data presented in the Warnings and Precautions, Grades 1 to 4 adverse reactions, and Grades 1 to 4 laboratory abnormalities. In all trials, a gonadotropin-releasing hormone (GnRH) analog or prior orchiectomy was required in both arms.

In the pooled data, median treatment duration was 11 months (0.1, 43) for abiraterone acetate-treated patients and 7.2 months (0.1, 43) for placebo-treated patients.

The most common adverse reactions (≥10%) that occurred more commonly (≥2%) in the abiraterone acetate arm were fatigue, arthralgia, hypertension, nausea, edema, hypokalemia, hot flush, diarrhea, vomiting, upper respiratory infection, cough, and headache. The most common laboratory abnormalities (≥20%) that occurred more commonly (≥2%) in the abiraterone acetate arm were anemia, elevated alkaline phosphatase, hypertriglyceridemia, lymphopenia, hypercholesterolemia, hyperglycemia, and hypokalemia. Grades 3 to 4 adverse events were reported for 53% of patients in the abiraterone acetate arm and 46% of patients in the placebo arm. Treatment discontinuation was reported in 14% of patients in the abiraterone acetate arm and 13% of patients in the placebo arm. The common adverse events (≥1%) resulting in discontinuation of abiraterone acetate and prednisone were hepatotoxicity and cardiac disorders.

Deaths associated with treatment-emergent adverse events were reported for 7.5% of patients in the abiraterone acetate arm and 6.5% of patients in the placebo arm. Of the patients in the abiraterone acetate arm, the most common cause of death was disease progression (5.3%). Other reported causes of death in ≥5 patients included pneumonia, cardio-respiratory arrest, death (no additional information), and general physical health deterioration.

#### COU-AA-301: Metastatic CRPC Following Chemotherapy

COU-AA-301 enrolled 1,195 patients with metastatic CRPC who had received prior docetaxel chemotherapy. Patients were not eligible if AST and/or ALT ≥2.5 X ULN in the absence of liver metastases. Patients with liver metastases were excluded if AST and/or ALT >5X ULN.

Table 1 shows adverse reactions on the abiraterone acetate arm in COU-AA-301 that occurred with a ≥2% absolute increase in frequency compared to placebo or were events of special interest. The median duration of treatment with abiraterone acetate with prednisone was 8 months.

Table 1: Adverse Reactions due to Abiraterone Acetate in COU-AA-301

System/Organ Class Adverse reaction	Abiraterone Acetate with Prednisone (N=791)		Placebo with Prednisone (N=394)	
	All Grades <sup>1</sup> %	Grade 3 to 4 %	All Grades %	Grade 3 to 4 %
<b>Musculoskeletal and connective tissue disorders</b>				
Joint swelling/discomfort <sup>2</sup>	30	4.2	23	4.1
Muscle discomfort <sup>3</sup>	26	3.0	23	2.3
<b>General disorders</b>				
Edema <sup>4</sup>	27	1.9	18	0.8
<b>Vascular disorders</b>				
Hot flush	19	0.3	17	0.3
Hypertension	8.5	1.3	6.9	0.3
<b>Gastrointestinal disorders</b>				
Diarrhea	18	0.6	14	1.3
Dyspepsia	6.1	0	3.3	0
<b>Infections and infestations</b>				
Urinary tract infection	12	2.1	7.1	0.5
Upper respiratory tract infection	5.4	0	2.5	0
<b>Respiratory, thoracic and mediastinal disorders</b>				
Cough	11	0	7.6	0
<b>Renal and urinary disorders</b>				
Urinary frequency	7.2	0.3	5.1	0.3
Nocturia	6.2	0	4.1	0
<b>Injury, poisoning and procedural complications</b>				
Fractures <sup>5</sup>	5.9	1.4	2.3	0
<b>Cardiac disorders</b>				
Arrhythmia <sup>6</sup>	7.2	1.1	4.6	1.0
Chest pain or chest discomfort <sup>7</sup>	3.8	0.5	2.8	0
Cardiac failure <sup>8</sup>	2.3	1.9	1.0	0.3

<sup>1</sup>Adverse events graded according to CTCAE version 3.0.

<sup>2</sup>Includes terms Arthritis, Arthralgia, Joint swelling, and Joint stiffness.

<sup>3</sup>Includes terms Muscle spasms, Musculoskeletal pain, Myalgia, Musculoskeletal discomfort, and Musculoskeletal stiffness.

<sup>4</sup>Includes terms Edema, Edema peripheral, Pitting edema, and Generalized edema.

<sup>5</sup>Includes all fractures with the exception of pathological fracture.

<sup>6</sup>Includes terms Arrhythmia, Tachycardia, Atrial fibrillation, Supraventricular tachycardia, Atrial tachycardia, Ventricular tachycardia, Atrial flutter, Bradycardia, Atrioventricular block complete, Conduction disorder, and Bradycardia.

<sup>7</sup>Includes terms Angina pectoris, Chest pain, and Angina unstable. Myocardial infarction or ischemia occurred more commonly in the placebo arm than in the abiraterone acetate tablets arm (1.3% vs. 1.1% respectively).

<sup>8</sup>Includes terms Cardiac failure, Cardiac failure congestive, Left ventricular dysfunction, Cardiogenic shock, Cardiomegaly, Cardiomyopathy, and Ejection fraction decreased.

Table 2 shows laboratory abnormalities of interest from COU-AA-301.

Table 2: Laboratory Abnormalities of Interest in COU-AA-301

Laboratory Abnormality	Abiraterone Acetate with Prednisone (N=791)		Placebo with Prednisone (N=394)	
	All Grades %	Grade 3 to 4 %	All Grades %	Grade 3 to 4 %
Hypertriglyceridemia	63	0.4	53	0
High AST	21	2.1	26	1.5
Hypokalemia	38	5.3	30	1.0
Hypophosphatemia	24	7.2	16	5.8
High ALT	11	1.4	10	0.8
High Total Bilirubin	6.6	0.1	4.6	0

#### COU-AA-302: Metastatic CRPC Prior to Chemotherapy

COU-AA-302 enrolled 1,088 patients with metastatic CRPC who had not received prior cytotoxic chemotherapy. Patients were ineligible if AST and/or ALT ≥2.5X ULN and patients were excluded if they had liver metastases.

Table 3 shows adverse reactions on the abiraterone acetate arm in COU-AA-302 that occurred in ≥5% of patients with a ≥2% absolute increase in frequency compared to placebo. The median duration of treatment with abiraterone acetate with prednisone was 13.5 months.

Table 3: Adverse Reactions in ≥5% of Patients on the Abiraterone Acetate Arm in COU-AA-302

System/Organ Class Adverse reaction	Abiraterone Acetate with Prednisone (N=542)		Placebo with Prednisone (N=540)	
	All Grades <sup>1</sup> %	Grade 3 to 4 %	All Grades %	Grade 3 to 4 %
<b>General disorders</b>				
Fatigue	39	2.2	34	1.7
Edema <sup>2</sup>	25	0.4	21	1.1
Pyrexia	8.7	0.6	5.9	0.2
<b>Musculoskeletal and connective tissue disorders</b>				
Joint swelling/discomfort <sup>3</sup>	30	2.0	25	2.0
Groin pain	6.6	0.4	4.1	0.7
<b>Gastrointestinal disorders</b>				
Constipation	23	0.4	19	0.6
Diarrhea	22	0.9	18	0.9
Dyspepsia	11	0.0	5.0	0.2
<b>Vascular disorders</b>				
Hot flush	22	0.2	18	0.0
Hypertension	22	3.9	13	3.0

(Continued in next column)

## PATIENT INFORMATION

### Abiraterone Acetate (a<sup>®</sup> bir a<sup>™</sup> ter one as<sup>™</sup> e tate) Tablets, USP

What are abiraterone acetate tablets? Abiraterone acetate tablets are a prescription medicine that is used along with prednisone. Abiraterone acetate tablets are used to treat men with prostate cancer that has spread to other parts of the body. It is not known if abiraterone acetate tablets are safe or effective in females or children.

Before taking abiraterone acetate tablets, tell your healthcare provider about all of your medical conditions, including if you:

- have liver problems
- have a history of adrenal problems
- have a history of pituitary problems
- are receiving any other treatment for prostate cancer
- are pregnant or plan to become pregnant. Abiraterone acetate tablets can cause harm to your unborn baby and loss of pregnancy (miscarriage). Females who are or may become pregnant should not handle abiraterone acetate tablets if broken, crushed, or damaged without protection, such as gloves.
- have a partner who is pregnant or may become pregnant.
- are a male who has female partners who are able to become pregnant should use effective birth control (contraception) during treatment with abiraterone acetate tablets and for 3 weeks after the last dose of abiraterone acetate tablets.
- are breastfeeding or plan to breastfeed. It is not known if abiraterone acetate passes into your breast milk.

Tell your healthcare provider about all the medicines you take or treatments you receive, including prescription and over-the-counter medicines, vitamins, and herbal supplements. Abiraterone acetate tablets can interact with many other medicines.

You should not start or stop any medicine before you talk with the healthcare provider that prescribes abiraterone acetate tablets. Know the medicines you take. Keep a list of them with you to show to your healthcare provider and pharmacist when you get a new medicine.

How should I take abiraterone acetate tablets? Take abiraterone acetate tablets and prednisone exactly as your healthcare provider tells you.

- Take your prescribed dose of abiraterone acetate tablets 1 time a day.
- Your healthcare provider may change your dose if needed.
- Do not change or stop taking your prescribed dose of abiraterone acetate tablets or prednisone without talking with your healthcare provider first.
- Take abiraterone acetate tablets on an empty stomach, at least one hour before or at least two hours after a meal. Do not take abiraterone acetate tablets with food. Taking abiraterone acetate tablets with food may cause more of the medicine to be absorbed by the body than is needed and this may cause side effects.
- Swallow abiraterone acetate tablets whole. Do not crush or chew tablets.
- Take abiraterone acetate tablets with water.
- If you miss a dose of abiraterone acetate tablets or prednisone, take your prescribed dose the following day. If you miss more than 1 dose, tell your healthcare provider right away.
- Your healthcare provider will do blood tests to check for side effects.

What are the possible side effects of abiraterone acetate tablets? Abiraterone acetate tablets may cause serious side effects including:

- High blood pressure (hypertension), low blood potassium levels (hypokalemia), fluid retention (edema), and irregular heartbeats can happen during treatment with abiraterone acetate tablets. This can be life threatening. To decrease the chance of this happening, you must take prednisone with abiraterone acetate tablets exactly as your healthcare provider tells you. Your healthcare provider will check your blood pressure, do blood tests to check your potassium levels

## 12 CLINICAL PHARMACOLOGY

### 12.1 Mechanism of Action

Abriraterone acetate is converted *in vivo* to abiraterone, an androgen biosynthesis inhibitor, that inhibits 17  $\alpha$ -hydroxylase/C17,20-lyase (CYP17). This enzyme is expressed in testicular, adrenal, and prostatic tumor tissues and is required for androgen biosynthesis.

CYP17 catalyzes two sequential reactions: 1) the conversion of pregnenolone and progesterone to their 17 $\alpha$ -hydroxy derivatives by 17 $\alpha$ -hydroxylase activity and 2) the subsequent formation of dehydroandrostosterone (DHEA) and androstenedione, respectively, by C17,20 lyase activity. DHEA and androstenedione are androgens and are precursors of testosterone. Inhibition of CYP17 by abiraterone can also result in increased mineralocorticoid production by the adrenals. *[See Warnings and Precautions (5.1)].*

Androgen sensitive prostatic carcinoma responds to treatment that decreases androgen levels. Androgen deprivation therapies, such as treatment with GnRH agonists or orchiectomy, decrease androgen production in the testes but do not affect androgen production by the adrenals or in the tumor.

Abriraterone acetate decreased serum testosterone and other androgens in patients in the placebo-controlled clinical trial. It is not necessary to monitor the effect of abiraterone acetate on serum testosterone levels.

Changes in serum prostate specific antigen (PSA) levels may be observed but have not been shown to correlate with clinical benefit in individual patients.

### 12.2 Pharmacodynamics

#### Cardiac Electrophysiology

In a multi-center, open-label, single-arm trial, 33 patients with metastatic CRPC received abiraterone acetate orally at a dose of 1,000 mg once daily at least 1 hour before or 2 hours after a meal in combination with prednisone 5 mg orally twice daily. Assessments up to Cycle 2 Day 2 showed no large changes in the QTc interval (i.e., >20 ms) from baseline. However, small increases in the QTc interval (i.e., <10 ms) due to abiraterone acetate cannot be excluded due to study design limitations.

#### 12.3 Pharmacokinetics

Following administration of abiraterone acetate, the pharmacokinetics of abiraterone and abiraterone acetate have been studied in healthy subjects and in patients with metastatic CRPC. *In vivo*, abiraterone acetate is converted to abiraterone. In clinical studies, abiraterone acetate plasma concentrations were below detectable levels (<0.2 ng/mL) in >99% of the analyzed samples.

#### Absorption

Following oral administration of abiraterone acetate to patients with metastatic CRPC, the median time to reach maximum plasma abiraterone concentrations is 2 hours. Abiraterone accumulation is observed at steady-state, with a 2-fold higher exposure (steady-state AUC) compared to a single 1,000 mg dose of abiraterone acetate.

At the dose of 1,000 mg daily in patients with metastatic CRPC, steady-state values (mean  $\pm$  SD) of  $C_{max}$  were 226  $\pm$  178 ng/mL and of AUC were 993  $\pm$  639 ng·hr/mL. No major deviation from dose proportionality was observed in the dose range of 250 mg to 1,000 mg. However, the exposure was not significantly increased when the dose was doubled from 1,000 to 2,000 mg (8% increase in the mean AUC).

Systemic exposure of abiraterone is increased when abiraterone acetate is administered with food. In healthy subjects abiraterone  $C_{max}$  and AUC $_{0-\infty}$  were approximately 7- and 5-fold higher, respectively, when a single dose of abiraterone acetate was administered with a low-fat meal (7% fat, 300 calories) and approximately 17- and 10-fold higher, respectively, when a single dose of abiraterone acetate was administered with a high-fat (57% fat, 825 calories) meal compared to overnight fasting. Abiraterone AUC $_{0-\infty}$  was approximately 7-fold or 1.6-fold higher, respectively, when a single dose of abiraterone acetate was administered 2 hours after or 1 hour before a medium fat meal (25% fat, 491 calories) compared to overnight fasting.

Systemic exposures of abiraterone in patients with metastatic CRPC, after repeated dosing of abiraterone acetate were similar when abiraterone acetate was taken with low-fat meals for 7 days and increased approximately 2-fold when taken with high-fat meals for 7 days compared to when taken at least 2 hours after a meal and at least 1 hour before a meal for 7 days.

Given the normal variation in the content and composition of meals, taking abiraterone acetate with meals has the potential to result in increased and highly variable exposures. Therefore, abiraterone acetate must be taken on an empty stomach, at least one hour before or at least two hours after a meal. The tablets should be swallowed whole with water. *[See Dosage and Administration (2.3)].*

#### Distribution and Protein Binding

Abiraterone is highly bound (>99%) to the human plasma proteins, albumin and alpha-1 acid glycoprotein. The apparent steady-state volume of distribution (mean  $\pm$  SD) is 19,669  $\pm$  13,358 L. *In vitro* studies show that at clinically relevant concentrations, abiraterone acetate and abiraterone are not substrates of P-glycoprotein (P-gp) and that abiraterone acetate is an inhibitor of P-gp.

#### Metabolism

Following oral administration of  $^{14}$ C-abiraterone acetate as capsules, abiraterone acetate is hydrolyzed to abiraterone (active metabolite). The conversion is likely through esterase activity (the esterase have not been identified) and is not CYP mediated. The two main circulating metabolites of abiraterone in human plasma are abiraterone sulphate (inactive) and N-oxide abiraterone sulphate (inactive), which account for about 43% of exposure each. CYP3A4 and SULT2A1 are the enzymes involved in the formation of N-oxide abiraterone sulphate and SULT2A1 is involved in the formation of abiraterone sulphate.

#### Excretion

In patients with metastatic CRPC, the mean terminal half-life of abiraterone in plasma (mean  $\pm$  SD) is 12  $\pm$  5 hours. Following oral administration of  $^{14}$ C-abiraterone acetate, approximately 88% of the radioactive dose is recovered in feces and approximately 5%, in urine. The major compounds present in feces are unchanged abiraterone acetate and abiraterone (approximately 55% and 22% of the administered dose, respectively).

#### Patients with Hepatic Impairment

The pharmacokinetics of abiraterone was examined in subjects with baseline mild (N=8) or moderate (N=8) hepatic impairment (Child-Pugh Class A and B, respectively) and in 8 healthy control subjects with normal hepatic function. The systemic exposure (AUC) of abiraterone increased by approximately 7-fold in subjects with severe hepatic impairment compared to subjects with normal hepatic function. In addition, the mean protein binding was found to be lower in the severe hepatic impairment group compared to the normal hepatic function group, which resulted in a two-fold increase in the fraction of free drug in patients with severe hepatic impairment. *[See Dosage and Administration (2.4) and Use in Specific Populations (8.6)].*

In another trial, the pharmacokinetics of abiraterone were examined in subjects with baseline severe (N=8) hepatic impairment (Child-Pugh Class C) and in 8 healthy control subjects with normal hepatic function. The systemic exposure (AUC) of abiraterone increased by approximately 7-fold in subjects with severe hepatic impairment compared to subjects with normal hepatic function. In addition, the mean protein binding was found to be lower in the severe hepatic impairment group compared to the normal hepatic function group, which resulted in a two-fold increase in the fraction of free drug in patients with severe hepatic impairment. *[See Dosage and Administration (2.4) and Use in Specific Populations (8.6)].*

#### Patients with Renal Impairment

The pharmacokinetics of abiraterone were examined in patients with end-stage renal disease (ESRD) on a stable hemodialysis schedule (N=8) and in matched control subjects with normal renal function (N=8). In the ESRD cohort of the trial, a single 1,000 mg abiraterone acetate dose was given under fasting conditions 1 hour after dialysis, and samples for pharmacokinetic analysis were collected up to 96 hours post dose. Systemic exposure to abiraterone after a single oral 1,000 mg dose did not increase in subjects with end-stage renal disease on dialysis, compared to subjects with normal renal function. *[See Use in Specific Populations (8.7)].*

#### Drug Interactions

*In vitro* studies with human hepatic microsomes showed that abiraterone has the potential to inhibit CYP1A2, CYP2D6, CYP2C8 and to a lesser extent CYP2C9, CYP2C19 and CYP3A4/5.

In an *in vivo* drug-drug interaction trial, the  $C_{max}$  and AUC of dextromethorphan (CYP2D6 substrate) were increased 2.8- and 2.9-fold, respectively when dextromethorphan 30 mg was given with abiraterone acetate 1,000 mg daily (plus prednisone 5 mg twice daily). The AUC for dextromethorphan, the active metabolite of dextromethorphan, increased approximately 1.3-fold. *[See Drug Interactions (7.2)].*

In a clinical study to determine the effects of abiraterone acetate 1,000 mg daily (plus prednisone 5 mg twice daily) on a single 100 mg dose of the CYP1A2 substrate theophylline, no increase in systemic exposure of theophylline was observed.

Abiraterone is a substrate of CYP3A4. *In vitro*. In a clinical pharmacokinetic interaction study of healthy subjects pretreated with a strong CYP3A4 inducer (rifampin, 600 mg daily for 6 days) followed by a single dose of abiraterone acetate 1,000 mg, the mean plasma AUC $_{0-\infty}$  of abiraterone was decreased by 55%. *[See Drug Interactions (7.1)].*

In a separate clinical pharmacokinetic interaction study of healthy subjects, co-administration of ketoconazole, a strong inhibitor of CYP3A4, had no clinically meaningful effect on the pharmacokinetics of abiraterone. *[See Drug Interactions (7.1)].*

In a CYP2C8 drug-drug interaction trial in healthy subjects, the AUC of pioglitazone was increased by 46% when pioglitazone was given together with a single dose of 1,000 mg abiraterone acetate. *[See Drug Interactions (7.2)].*

*In vitro*, abiraterone and its major metabolites were shown to inhibit the hepatic uptake transporter OATP1B1. There are no clinical data available to confirm transporter based interaction.

## 13 NONCLINICAL TOXICOLOGY

### 13.1 Carcinogenesis, Mutagenesis, and Impairment of Fertility

A two-year carcinogenicity study was conducted in rats at oral abiraterone acetate doses of 5, 15, and 52 mg/kg/day for males and 15, 50, and 150 mg/kg/day for females. Abiraterone acetate increased the combined incidence of interstitial cell adenomas and carcinomas in the testes at all dose levels tested. This finding is considered to be related to the pharmacological activity of abiraterone. Rats are regarded as more sensitive than humans to developing interstitial cell tumors in the testes. Abiraterone acetate was not carcinogenic in female rats at exposure levels up to 0.8 times the human clinical exposure based on AUC. Abiraterone acetate was not carcinogenic in a 6-month study in the transgenic (Tg.rasH2) mouse.

Abiraterone acetate and abiraterone was not mutagenic in an *in vitro* microbial mutagenesis (Ames) assay or clastogenic in an *in vitro* cytogenetic assay using primary human lymphocytes or in an *in vitro* rat micronucleus assay.

In repeat-dose toxicity studies in male rats (13- and 26-weeks) and monkeys (39-weeks), atrophy, aspermatid, hypospermatid, and hyperplasia in the reproductive system were observed at  $\geq$ 50 mg/kg/day in rats and  $\geq$ 250 mg/kg/day in monkeys and were consistent with the androgenic pharmacological activity of abiraterone. These effects were observed in rats at systemic exposures similar to humans and in monkeys at exposures approximately 0.6 times the AUC in humans.

In a fertility study in male rats, reduced organ weights of the reproductive system, sperm counts, sperm motility, altered sperm morphology and decreased fertility were observed in animals dosed for 4 weeks at  $\geq$ 30 mg/kg/day orally. Mating of untreated females with males that received 30 mg/kg/day oral abiraterone acetate resulted in a reduced number of corpora lutea, implantations and live embryos and an increased incidence of pre-implantation loss. Effects on male rats were reversible after 16 weeks from the last abiraterone acetate administration.

In a fertility study in female rats, animals dosed orally for 2 weeks until day 7 of pregnancy at  $\geq$ 30 mg/kg/day had an increased incidence of irregular or extended estrous cycles and pre-implantation loss (300 mg/kg/day). There were no differences in mating, fertility, and litter parameters in female rats that received abiraterone acetate. Effects on female rats were reversible after 4 weeks from the last abiraterone acetate administration.

The dose of 30 mg/kg/day in rats is approximately 0.3 times the recommended dose of 1,000 mg/day based on body surface area.

In 13- and 26-week studies in rats and 13- and 39-week studies in monkeys, a reduction in circulating testosterone levels occurred with abiraterone acetate at approximately one half the human clinical exposure based on AUC. As a result, decreases in organ weights and toxicities were observed in the male and female reproductive system, adrenal glands, liver, pituitary (rats only), and male mammary glands. The changes in the reproductive organs are consistent with the androgenic pharmacological activity of abiraterone acetate.

### 13.2 Animal Toxicology and/or Pharmacology

A dose-dependent increase in cataracts was observed in rats after daily oral abiraterone acetate administration for 26 weeks starting at  $\geq$ 50 mg/kg/day (similar to the human clinical exposure based on AUC). In a 39-week monkey study with daily oral abiraterone acetate administration, no cataracts were observed at higher doses (2 times greater than the clinical exposure based on AUC).

## 14 CLINICAL STUDIES

The efficacy and safety of abiraterone acetate with prednisone was established in three randomized placebo-controlled international clinical studies. All patients in these studies received a GnRH analog or had prior bilateral orchiectomy. Patients with prior letrozole treatment for prostate cancer and a history of adrenal gland or pituitary disorders were excluded from these trials. Concurrent use of spironolactone was not allowed during the study period.

### COU-AA-301: Patients with metastatic CRPC who had received prior docetaxel chemotherapy

In COU-AA-301 (NCT00638690), a total of 1,195 patients were randomized 2:1 to receive either abiraterone acetate orally at a dose of 1,000 mg once daily in combination with prednisone 5 mg orally twice daily (N=797) or placebo once daily plus prednisone 5 mg orally twice daily (N=398). Patients randomized to either arm were to continue treatment until disease progression (defined as a 25% increase in PSA over the patient's baseline/radii together with protocol-defined radiographic progression and symptomatic or clinical progression), initiation of new treatment, unacceptable toxicity or withdrawal.

The following patient demographics and baseline disease characteristics were balanced between the treatment arms. The median age was 69 years (range 39 to 95) and the racial distribution was 93% Caucasian, 3.6% Black, 1.7% Asian, and 1.6% Other. Eighty-nine percent of patients enrolled had an ECOG performance status score of 0 to 1 and 45% had a Brief Pain Inventory-Short Form score of  $\geq$ 4 (patient's reported worst pain over the previous 24 hours). Ninety percent of patients had metastases in bone and 30% had visceral involvement. Seventy percent of patients had radiographic evidence of disease progression and 30% had PSA-only progression. Seventy percent of patients had previously received one cytotoxic chemotherapy regimen and 30% received two regimens.

The protocol pre-specified interim analysis was conducted after 552 deaths and showed a statistically significant improvement in overall survival (OS) in patients treated with abiraterone acetate with prednisone compared to patients in the placebo with prednisone arm (Table 9 and Figure 1). An updated survival analysis was conducted when 775 deaths (97% of the planned number of deaths for final analysis) were observed. Results from this analysis were consistent with those from the interim analysis (Table 7).

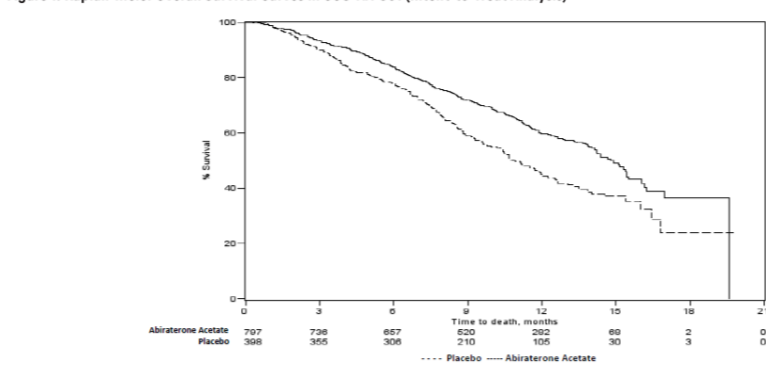
**Table 7: Overall Survival of Patients Treated with Either Abiraterone Acetate or Placebo in Combination with Prednisone in COU-AA-301 (Intent-to-Treat Analysis)**

	Abiraterone Acetate with Prednisone (N=797)	Placebo with Prednisone (N=398)
<b>Primary Survival Analysis</b>		
Deaths (%)	333 (42%)	219 (55%)
Median survival (months) (95% CI)	14.8 (14.1, 15.4)	10.9 (10.2, 12.0)
p-value <sup>a</sup>		<0.0001
Hazard ratio (95% CI) <sup>b</sup>		0.646 (0.543, 0.768)
<b>Updated Survival Analysis</b>		
Deaths (%)	501 (63%)	274 (69%)
Median survival (months) (95% CI)	15.8 (14.8, 17.0)	11.2 (10.4, 13.1)
Hazard ratio (95% CI) <sup>b</sup>		0.740 (0.638, 0.859)

p-value is derived from a log-rank test stratified by ECOG performance status score (0-1 vs. 2), pain score (absent vs. present), number of prior chemotherapy regimens (1 vs. 2), and type of disease progression (PSA only vs. radiographic).

Hazard Ratio is derived from a stratified proportional hazards model. Hazard ratio <1 favors abiraterone acetate with prednisone.

Figure 1: Kaplan-Meier Overall Survival Curves in COU-AA-301 (Intent-to-Treat Analysis)



**COU-AA-302: Patients with metastatic CRPC who had not received prior cytotoxic chemotherapy**

In COU-AA-302 (NCT0087198), 1,088 patients were randomized 1:1 to receive either abiraterone acetate orally at a dose of 1,000 mg once daily (N=546) or placebo orally once daily (N=542). Both arms were given concomitant prednisone 5 mg twice daily. Patients continued treatment until radiographic or clinical (cytotoxic chemotherapy, radiation or surgical treatment for cancer, pain requiring chronic opioids, or ECOG performance status decline to 3 or more) disease progression, unacceptable toxicity or withdrawal. Patients with moderate or severe pain, opiate use for cancer pain, or visceral organ metastases were excluded.

Patient demographics were balanced between the treatment arms. The median age was 70 years. The racial distribution of patients treated with abiraterone acetate was 95% Caucasian, 2.8% Black, 0.7% Asian and 1.1% Other. The ECOG performance status was 0 for 76% of patients, and 1 for 24% of patients. Co-primary efficacy endpoints were overall survival and radiographic progression-free survival (rPFS). Baseline pain assessment was 0 to 1 (asymptomatic) in 66% of patients and 2 to 3 (mildly symptomatic) in 26% of patients as defined by the Brief Pain Inventory-Short Form (worst pain over the last 24 hours).

Radiographic progression-free survival was assessed with the use of sequential imaging studies and was defined by bone scan identification of 2 or more new bone lesions with confirmation (Prostate Cancer Working Group 2 criteria) and/or modified Response Evaluation Criteria in Solid Tumors (RECIST) criteria for progression of soft tissue lesions. Analysis of rPFS utilized centrally-reviewed radiographic assessment of progression.

The planned final analysis for OS, conducted after 741 deaths (median follow up of 49 months) demonstrated a statistically significant OS improvement in patients treated with abiraterone acetate with prednisone compared to those treated with placebo with prednisone (Table 8 and Figure 2). Sixty-five percent of patients on the abiraterone acetate arm and 78% of patients on the placebo arm used subsequent therapies that may prolong OS in metastatic CRPC. Abiraterone acetate was used as a subsequent therapy in 15% of patients on the abiraterone acetate arm and 44% of patients on the placebo arm.

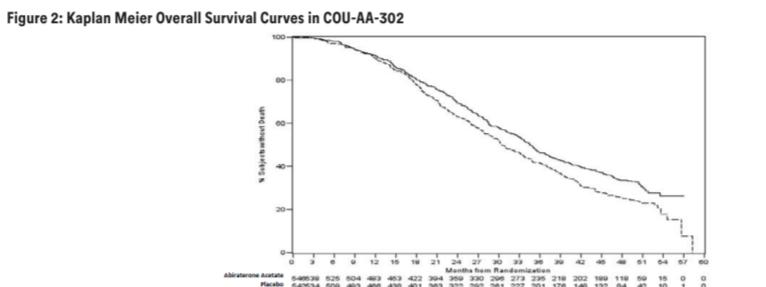
**Table 8: Overall Survival of Patients Treated with Either Abiraterone Acetate or Placebo in Combination with Prednisone in COU-AA-302 (Intent-to-Treat Analysis)**

	Abiraterone Acetate with Prednisone (N=546)	Placebo with Prednisone (N=542)
<b>Overall Survival</b>		
Deaths	354 (65%)	387 (71%)
Median survival (months)	34.7 (32.7, 36.8)	30.5 (28.7, 33.3)
(95% CI)		
p-value <sup>a</sup>		0.0033
Hazard ratio <sup>b</sup> (95% CI)		0.81 (0.70, 0.93)

p-value is derived from a log-rank test stratified by ECOG performance status score (0 vs. 1).

Hazard Ratio is derived from a stratified proportional hazards model. Hazard ratio <1 favors abiraterone acetate with prednisone.

Figure 2: Kaplan Meier Overall Survival Curves in COU-AA-302



At the pre-specified rPFS analysis, 150 (28%) patients treated with abiraterone acetate with prednisone and 251 (46%) patients treated with placebo with prednisone had radiographic progression. A significant difference in rPFS between treatment groups was observed (Table 9 and Figure 3).

**Table 9: Radiographic Progression-free Survival of Patients Treated with Either Abiraterone Acetate or Placebo in Combination with Prednisone in COU-AA-302 (Intent-to-Treat Analysis)**

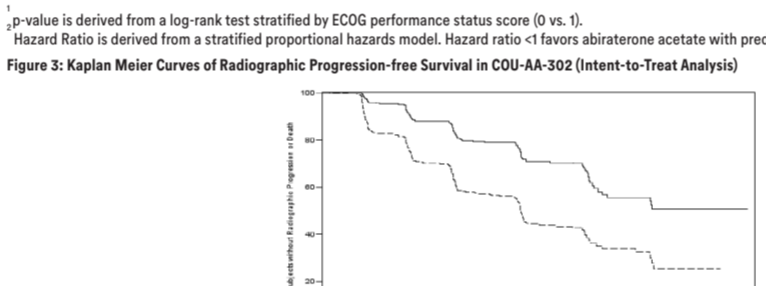
	Abiraterone Acetate with Prednisone (N=546)	Placebo with Prednisone (N=542)
<b>Radiographic Progression-free Survival</b>		
Progression or death	150 (28%)	251 (46%)
Median rPFS (months) (95% CI)	NR (11.66, NR)	8.28 (8.12, 8.54)
p-value <sup>a</sup>		<0.0001
Hazard ratio <sup>b</sup> (95% CI)		0.425 (0.347, 0.522)

NR=Not reached.

p-value is derived from a log-rank test stratified by ECOG performance status score (0 vs. 1).

Hazard Ratio is derived from a stratified proportional hazards model. Hazard ratio <1 favors abiraterone acetate with prednisone.

Figure 3: Kaplan Meier Curves of Radiographic Progression-free Survival in COU-AA-302 (Intent-to-Treat Analysis)



The primary efficacy analyses are supported by the following prospectively defined endpoints. The median time to initiation of cytotoxic chemotherapy was 25.2 months for patients in the abiraterone acetate arm and 16.8 months for patients in the placebo arm (HR=0.580; 95% CI [0.487, 0.691], p < 0.0001).

The median time to opiate use for prostate cancer pain was not reached for patients receiving abiraterone acetate and was 23.7 months for patients receiving placebo (HR=0.686; 95% CI [0.566, 0.833], p=0.0001). The time to opiate use result was supported by a delay in patient reported pain progression favoring the abiraterone acetate arm.

### 16 HOW SUPPLIED/STORAGE AND HANDLING

Abiraterone acetate tablets USP, 250 mg are white to off-white, oval shaped, film coated tablets debossed with "35" on one side and plain on other side. Abiraterone acetate tablets USP, 250 mg are available in high-density polyethylene bottles of 120 tablets.

Bottles of 120 NDC 43598-358-04

#### Storage and Handling

Store at 20°C to 25°C (68°F to 77°F); excursions permitted in the range from 15°C to 30°C (59°F to 86°F) [see USP Controlled Room Temperature]. Keep out of reach of children.

Based on its mechanism of action, abiraterone acetate may harm a developing fetus. Women who are pregnant or women who may be pregnant should not handle abiraterone acetate 250 mg tablets if broken, crushed, or damaged without protection, e.g., gloves. *[See Use in Specific Populations (8.1)].*

### 17 PATIENT COUNSELING INFORMATION

Advise the patient to read the FDA-approved patient labeling (Patient Information).

#### Hypokalemia, Fluid Retention, and Cardiovascular Adverse Reactions

Inform patients that abiraterone acetate is associated with hypertension, hypokalemia, and peripheral edema that may lead to QT prolongation and Torsades de Pointes in patients who develop hypokalemia while taking abiraterone acetate tablets. Advise patients that their blood pressure, serum potassium and signs and symptoms of fluid retention will be monitored clinically at least monthly. Advise patients to adhere to corticosteroids and to report symptoms of hypertension, hypokalemia, or edema to their healthcare provider. *[See Warnings and Precautions (5.1)].*

#### Adrenocortical Insufficiency

Inform patients that abiraterone acetate with prednisone is associated with adrenal insufficiency. Advise patients to report symptoms of adrenocortical insufficiency to their healthcare provider. *[See Warnings and Precautions (5.2)].*

#### Hepatotoxicity

Inform patients that abiraterone acetate is associated with severe hepatotoxicity. Inform patients that their liver function will be monitored using blood tests.

Advise patients to immediately report symptoms of hepatotoxicity to their healthcare provider. *[See Warnings and Precautions (5.3)].*

#### Use in Combination with Radium Ra 223 Dichloride

Advise patients that radium Ra 223 dichloride showed an increase in mortality and an increased rate of fracture when used in combination with abiraterone acetate plus prednisone/prednisolone. Inform patients to speak with their healthcare provider about any other medications or treatment they are currently taking for prostate cancer. *[See Warnings and Precautions (5.4)].*

#### Dosing and Administration

Inform patients that abiraterone acetate tablets are taken once daily with prednisone twice daily (according to their healthcare provider's instructions) and to not interrupt or stop either of these medications without consulting their healthcare provider.

Inform patients receiving GnRH therapy that they need to maintain this treatment during the course of treatment with abiraterone acetate tablets.

Inform patients to take abiraterone acetate tablets on an empty stomach, at least one hour before or at least two hours after a meal. Abiraterone acetate tablets taken with food causes increased exposure and may result in adverse reactions. Instruct patients to swallow tablets whole with water and not to crush or chew the tablets. *[See Dosage and Administration (2.3)].*

Inform patients that if they miss a dose of abiraterone acetate tablets or prednisone, they should take their normal dose the following day. If more than one daily dose is skipped, inform patients to contact their healthcare provider. *[See Dosage and Administration (2.3)].*

#### Embryo-Fetal Toxicity

Inform patients that abiraterone acetate may harm a developing fetus and can cause loss of pregnancy.

Advise males with female partners of reproductive potential to use effective contraception during treatment and for 3 weeks after the final dose of abiraterone acetate. *[See Use in Specific Populations (8.1)].*

Advise females who are pregnant or women who may be pregnant not to handle abiraterone acetate 250 mg tablets if broken, crushed, or damaged without protection, e.g., gloves. *[See Use in Specific Populations (8.1) and How Supplied/Storage and Handling (16)].*

#### Fertility

Advise male patients that abiraterone acetate may impair fertility. *[See Use in Specific Populations (8.3)].*

## PATIENT INFORMATION

### Abiraterone Acetate (a' bir a' ter one as' e' tate) Tablets, USP

#### What are abiraterone acetate tablets?

Abiraterone acetate tablets are a prescription medicine that is used along with prednisone. Abiraterone acetate tablets are used to treat men with prostate cancer that has spread to other parts of the body.

It is not known if abiraterone acetate tablets are safe or effective in females or children.

**Before taking abiraterone acetate tablets, tell your healthcare provider about all of your medical conditions, including if you:**

- have heart problems
- have liver problems
- have a history of adrenal problems
- have a history of pituitary problems
- are receiving any other treatment for prostate cancer
- are pregnant or plan to become pregnant. Abiraterone acetate tablets can cause harm to your unborn baby and loss of pregnancy (miscarriage). Females who are or may become pregnant should not handle abiraterone acetate tablets if broken, crushed, or damaged without protection, such as gloves.
- have a partner who is pregnant or may become pregnant.
- Males who have female partners who are able to become pregnant should use effective birth control (contraception) during treatment with abiraterone acetate tablets and for 3 weeks after the last dose of abiraterone acetate tablets.
- are breastfeeding or plan to breastfeed. It is not known if abiraterone acetate passes into your breast milk.

**Tell your healthcare provider about all the medicines you take or treatments you receive, including prescription and over-the-counter medicines, vitamins, and herbal supplements.** Abiraterone acetate tablets can interact with many other medicines.

You should not start or stop any medicine before you talk with the healthcare provider that prescribed abiraterone acetate tablets.

Know the medicines you take. Keep a list of them with you to show to your healthcare provider and pharmacist when you get a new medicine.

#### How should I take abiraterone acetate tablets?

- Take abiraterone acetate tablets and prednisone exactly as your healthcare provider tells you.
- Take your prescribed dose of abiraterone acetate tablets 1 time a day.
- Your healthcare provider may change your dose if needed.
- Do not change or stop taking your prescribed dose of abiraterone acetate tablets or prednisone without talking with your healthcare provider first