

2011 NORTH AMERICAN GENERICS Product Catalog





DR. REDDY'S NORTH AMERICAN GENERICS

At Dr. Reddy's North American Generics, we understand that every customer has a choice of products, as well as a choice of where to acquire them. Knowing this, we strive to provide quality products at the best value every day. Our ultimate goal is to provide affordable and innovative medicines for healthier lives.

Dr. Reddy's North American Generics began selling finished dosage-form products in the United States and Canada in 2001. Today, under the Dr. Reddy's label, 44 prescription products are marketed in 176 dosing presentations. Our Private Label OTC Group, established in 2007, markets 11 products in 200+ store brand packaging presentations. We are also uniquely positioned to support Rx-to-OTC switches through our OTC group.

Vertical integration ensures that our products are delivered on time. Our manufacturing facilities, with an enviable record of regulatory compliance, follow cGMP guidelines in the production of finished dosage forms. Dr. Reddy's has 4 FDA-approved finished dosage facilities servicing North American Generics and 8 FDA-approved API facilities. Plans for additional dosage forms, including injectables, liquids, biologicals, and topicals, are also under way. Dr. Reddy's has 74 ANDA's pending approval of which 32 are Para IV certifications. By striving to be the "first choice" for our customers, the sales, marketing, regulatory, sales operations, and supply chain teams are ready to take the company to the next level.



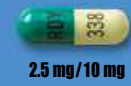
Allopurinol Tablets, USP (AB Rated)

NDC#	PRODUCT DESCRIPTION	SIZE/CT	COMPARE TO	COLOR/SHAPE/MARKINGS	CASE PK
55111-729-01	Allopurinol 100 mg Tablets	100	ZYLOPRIM®	Off white, round tablet, 0524/0405	24
55111-729-10	Allopurinol 100 mg Tablets	1000	ZYLOPRIM®	Off white, round tablet, 0524/0405	12
55111-730-01	Allopurinol 300 mg Tablets	100	ZYLOPRIM®	Off white, round tablet, AL3	24
55111-730-05	Allopurinol 300 mg Tablets	500	ZYLOPRIM®	Off white, round tablet, AL3	12
55111-730-10	Allopurinol 300 mg Tablets	1000	ZYLOPRIM®	Off white, round tablet, AL3	12



Cetirizine Hydrochloride Tablets (AB Rated)

NDC#	PRODUCT DESCRIPTION	SIZE/CT	COMPARE TO	COLOR/SHAPE/MARKINGS	CASE PK
55111-351-90	Cetirizine Hydrochloride 10 mg Tablets	90	ZYRTEC®	White, round tablet, RDY/351	6



Amlodipine Besylate and Benazepril Hydrochloride Capsules (AB Rated)

NDC#	PRODUCT DESCRIPTION	SIZE/CT	COMPARE TO	COLOR/SHAPE/MARKINGS	CASE PK
55111-338-01	Amlodipine Besylate and Benazepril Hydrochloride 2.5 mg/10 mg Capsules	100	LOTREL®	Blue-green/ivory, capsule, RDY/338	24
55111-339-01	Amlodipine Besylate and Benazepril Hydrochloride 5 mg/10 mg Capsules	100	LOTREL®	Yellow/ivory, capsule, RDY/339	24
55111-339-05	Amlodipine Besylate and Benazepril Hydrochloride 5 mg/10 mg Capsules	500	LOTREL®	Yellow/ivory, capsule, RDY/339	12
55111-340-01	Amlodipine Besylate and Benazepril Hydrochloride 5 mg/20 mg Capsules	100	LOTREL®	Orange/ivory, capsule, RDY/340	24
55111-340-05	Amlodipine Besylate and Benazepril Hydrochloride 5 mg/20 mg Capsules	500	LOTREL®	Orange/ivory, capsule, RDY/340	12
55111-341-01	Amlodipine Besylate and Benazepril Hydrochloride 10 mg/20 mg Capsules	100	LOTREL®	Light grey/ivory, capsule, RDY/341	24
55111-341-05	Amlodipine Besylate and Benazepril Hydrochloride 10 mg/20 mg Capsules	500	LOTREL®	Light grey/ivory, capsule, RDY/341	24



Ciprofloxacin Extended Release Tablets (AB Rated)

NDC#	PRODUCT DESCRIPTION	SIZE/CT	COMPARE TO	COLOR/SHAPE/MARKINGS	CASE PK
55111-422-30	Ciprofloxacin 500 mg Extended Release Tablets	30	CIPRO® XR	White, oblong tablet, RDY/422	24
55111-423-30	Ciprofloxacin 1000 mg Extended Release Tablets	30	CIPRO® XR	White, oblong tablet, RDY/423	12



Anastrozole Tablets (AB Rated)

NDC#	PRODUCT DESCRIPTION	SIZE/CT	COMPARE TO	COLOR/SHAPE/MARKINGS	CASE PK
55111-647-30	Anastrozole 1 mg Tablets	30	ARIMIDEX®	White, round tablet, RDY/1	24



Ciprofloxacin Tablets, USP (AB Rated)

NDC#	PRODUCT DESCRIPTION	SIZE/CT	COMPARE TO	COLOR/SHAPE/MARKINGS	CASE PK
55111-125-06	Ciprofloxacin 100 mg Tablets	6	CIPRO®	White, oval tablet, R/125	12
55111-126-01	Ciprofloxacin 250 mg Tablets	100	CIPRO®	White, oval tablet, R/126	24
55111-126-05	Ciprofloxacin 250 mg Tablets	500	CIPRO®	White, oval tablet, R/126	12
55111-127-01	Ciprofloxacin 500 mg Tablets	100	CIPRO®	White, oval tablet, R/127	24
55111-127-05	Ciprofloxacin 500 mg Tablets	500	CIPRO®	White, oval tablet, R/127	12
55111-128-50	Ciprofloxacin 750 mg Tablets	50	CIPRO®	White, oval tablet, R/128	24

Citalopram Hydrobromide Tablets (AB Rated)

NDC#	PRODUCT DESCRIPTION	SIZE/CT	COMPARE TO	COLOR/SHAPE/MARKINGS	CASE PK
55111-342-30	Citalopram Hydrobromide 10 mg Tablets	30	CELEXA®	Brown, round tablet, RDY/342	24
55111-342-01	Citalopram Hydrobromide 10 mg Tablets	100	CELEXA®	Brown, round tablet, RDY/342	24
55111-342-05	Citalopram Hydrobromide 10 mg Tablets	500	CELEXA®	Brown, round tablet, RDY/342	12
55111-343-30	Citalopram Hydrobromide 20 mg Tablets	30	CELEXA®	Pink, round tablet, RDY/343	24
55111-343-01	Citalopram Hydrobromide 20 mg Tablets	100	CELEXA®	Pink, round tablet, RDY/343	24
55111-343-05	Citalopram Hydrobromide 20 mg Tablets	500	CELEXA®	Pink, round tablet, RDY/343	12
55111-344-30	Citalopram Hydrobromide 40 mg Tablets	30	CELEXA®	White, round tablet, RDY/344	24
55111-344-01	Citalopram Hydrobromide 40 mg Tablets	100	CELEXA®	White, round tablet, RDY/344	24
55111-344-05	Citalopram Hydrobromide 40 mg Tablets	500	CELEXA®	White, round tablet, RDY/344	12

Carvedilol Tablets (AB Rated)

NDC#	PRODUCT DESCRIPTION	SIZE/CT	COMPARE TO	COLOR/SHAPE/MARKINGS	CASE PK
55111-252-01	Carvedilol 3.125 mg Tablets	100	COREG®	Yellow, round tablet, R/252	24
55111-252-05	Carvedilol 3.125 mg Tablets	500	COREG®	Yellow, round tablet, R/252	12
55111-253-01	Carvedilol 6.25 mg Tablets	100	COREG®	White, round tablet, R/253	24
55111-253-05	Carvedilol 6.25 mg Tablets	500	COREG®	White, round tablet, R/253	12
55111-254-01	Carvedilol 12.5 mg Tablets	100	COREG®	White, round tablet, R/254	24
55111-254-05	Carvedilol 12.5 mg Tablets	500	COREG®	White, round tablet, R/254	24
55111-255-01	Carvedilol 25 mg Tablets	100	COREG®	White, round tablet, R/255	24
55111-255-05	Carvedilol 25 mg Tablets	500	COREG®	White, round tablet, R/255	12



Divalproex Sodium Coated Particles in Capsules (SPR) (AB Rated)

NDC#	PRODUCT DESCRIPTION	SIZE/CT	COMPARE TO	COLOR/SHAPE/MARKINGS	CASE PK
55111-532-01	Divalproex Sodium 125 mg Coated Particles in Capsules (SPR)	100	DEPAKOTE® SPRINKLES	Light blue/white, capsule, "This End Up", RDY/532	24
55111-532-05	Divalproex Sodium 125 mg Coated Particles in Capsules (SPR)	500	DEPAKOTE® SPRINKLES	Light blue/white, capsule, "This End Up", RDY/532	12



Famotidine Tablets, USP (AB Rated)

NDC#	PRODUCT DESCRIPTION	SIZE/CT	COMPARE TO	COLOR/SHAPE/MARKINGS	CASE PK
55111-119-01	Famotidine 20 mg Tablets	100	PEPCID®	Yellow, round tablet, C119	24
55111-119-10	Famotidine 20 mg Tablets	1000	PEPCID®	Yellow, round tablet, C119	6
55111-120-01	Famotidine 40 mg Tablets	100	PEPCID®	Yellow, round tablet, C120	24



20 mg 40 mg

Glycopyrrolate Tablets, USP (AA Rated)

NDC#	PRODUCT DESCRIPTION	SIZE/CT	COMPARE TO	COLOR/SHAPE/MARKINGS	CASE PK
55111-648-01	Glycopyrrolate 1 mg Tablets	100	ROBINUL®	White, capsule-shaped tablet, I 21	24
55111-649-01	Glycopyrrolate 2 mg Tablets	100	ROBINUL®	White, capsule-shaped tablet, I 22	24



1 mg

2 mg

Finasteride Tablets, USP (AB Rated)

NDC#	PRODUCT DESCRIPTION	SIZE/CT	COMPARE TO	COLOR/SHAPE/MARKINGS	CASE PK
55111-172-30	Finasteride 5 mg Tablets	30	PROSCAR®	Green, oval tablet, R/172	24
55111-172-90	Finasteride 5 mg Tablets	90	PROSCAR®	Green, oval tablet, R/172	24



5 mg

IBU® Ibuprofen Tablets, USP (AB Rated)

NDC#	PRODUCT DESCRIPTION	SIZE/CT	COMPARE TO	COLOR/SHAPE/MARKINGS	CASE PK
55111-682-09	IBU® Ibuprofen 400 mg Tablets	90	MOTRIN®	White, oval tablet, 4I	24
55111-682-01	IBU® Ibuprofen 400 mg Tablets	100	MOTRIN®	White, oval tablet, 4I	96
55111-682-05	IBU® Ibuprofen 400 mg Tablets	500	MOTRIN®	White, oval tablet, 4I	12
55111-682-99	IBU® Ibuprofen 400 mg Tablets BULK	25000	MOTRIN®	White, oval tablet, 4I	1
55111-683-30	IBU® Ibuprofen 600 mg Tablets	30	MOTRIN®	White, caplet-shaped tablet, 6I	24
55111-683-50	IBU® Ibuprofen 600 mg Tablets	50	MOTRIN®	White, caplet-shaped tablet, 6I	24
55111-683-09	IBU® Ibuprofen 600 mg Tablets	90	MOTRIN®	White, caplet-shaped tablet, 6I	24
55111-683-01	IBU® Ibuprofen 600 mg Tablets	100	MOTRIN®	White, caplet-shaped tablet, 6I	96
55111-683-05	IBU® Ibuprofen 600 mg Tablets	500	MOTRIN®	White, caplet-shaped tablet, 6I	12
55111-683-88	IBU® Ibuprofen 600 mg Tablets BULK	15000	MOTRIN®	White, caplet-shaped tablet, 6I	1
55111-684-30	IBU® Ibuprofen 800 mg Tablets	30	MOTRIN®	White, caplet-shaped tablet, 8I	24
55111-684-50	IBU® Ibuprofen 800 mg Tablets	50	MOTRIN®	White, caplet-shaped tablet, 8I	24
55111-684-60	IBU® Ibuprofen 800 mg Tablets	60	MOTRIN®	White, caplet-shaped tablet, 8I	24
55111-684-09	IBU® Ibuprofen 800 mg Tablets	90	MOTRIN®	White, caplet-shaped tablet, 8I	24
55111-684-01	IBU® Ibuprofen 800 mg Tablets	100	MOTRIN®	White, caplet-shaped tablet, 8I	96
55111-684-05	IBU® Ibuprofen 800 mg Tablets	500	MOTRIN®	White, caplet-shaped tablet, 8I	12
55111-684-69	IBU® Ibuprofen 800 mg Tablets BULK	12000	MOTRIN®	White, caplet-shaped tablet, 8I	1



400 mg



600 mg



800 mg

Fluoxetine Capsules, USP (AB Rated)

NDC#	PRODUCT DESCRIPTION	SIZE/CT	COMPARE TO	COLOR/SHAPE/MARKINGS	CASE PK
55111-147-01	Fluoxetine 10 mg Capsules	100	PROZAC®	Opaque light blue, capsule, FLUOXETINE 10 mg/R147	24
55111-148-01	Fluoxetine 20 mg Capsules	100	PROZAC®	Light blue cap/turquoise body, capsule, FLUOXETINE 20 mg/R148	24
55111-148-10	Fluoxetine 20 mg Capsules	1000	PROZAC®	Light blue cap/turquoise body, capsule, FLUOXETINE 20 mg/R148	6
55111-149-30	Fluoxetine 40 mg Capsules	30	PROZAC®	Light blue cap/white body, capsule, FLUOXETINE 40 mg/R149	24
55111-149-01	Fluoxetine 40 mg Capsules	100	PROZAC®	Light blue cap/white body, capsule, FLUOXETINE 40 mg/R149	24



10 mg 20 mg

40 mg

Fluoxetine Delayed-Release Capsules, USP (AB Rated)

NDC#	PRODUCT DESCRIPTION	SIZE/CT	COMPARE TO	COLOR/SHAPE/MARKINGS	CASE PK
55111-284-48	Fluoxetine 90 mg Delayed-Release Capsules	4	PROZAC® WEEKLY	Brown cap/white body, capsule, RDY/284	12



90 mg

Lamotrigine Tablets (AB Rated)

NDC#	PRODUCT DESCRIPTION	SIZE/CT	COMPARE TO	COLOR/SHAPE/MARKINGS	CASE PK
55111-220-01	Lamotrigine 25 mg Tablets	100	LAMICTAL®	Light yellow, round tablet, RDY/220	24
55111-220-05	Lamotrigine 25 mg Tablets	500	LAMICTAL®	Light yellow, round tablet, RDY/220	12
55111-221-01	Lamotrigine 100 mg Tablets	100	LAMICTAL®	Light yellow, round tablet, RDY/221	24
55111-221-05	Lamotrigine 100 mg Tablets	500	LAMICTAL®	Light yellow, round tablet, RDY/221	12
55111-222-60	Lamotrigine 150 mg Tablets	60	LAMICTAL®	Light yellow, round tablet, RDY/222	24
55111-222-05	Lamotrigine 150 mg Tablets	500	LAMICTAL®	Light yellow, round tablet, RDY/222	12
55111-223-60	Lamotrigine 200 mg Tablets	60	LAMICTAL®	Light yellow, round tablet, RDY/223	24
55111-223-05	Lamotrigine 200 mg Tablets	500	LAMICTAL®	Light yellow, round tablet, RDY/223	12



25 mg

100 mg

150 mg

200 mg

Glimepiride Tablets (AB Rated)

NDC#	PRODUCT DESCRIPTION	SIZE/CT	COMPARE TO	COLOR/SHAPE/MARKINGS	CASE PK
55111-320-01	Glimepiride 1 mg Tablets	100	AMARYL®	Peach, oval tablet, RDY/320	24
55111-320-05	Glimepiride 1 mg Tablets	500	AMARYL®	Peach, oval tablet, RDY/320	12
55111-321-01	Glimepiride 2 mg Tablets	100	AMARYL®	Green, oval tablet, RDY/321	24
55111-321-05	Glimepiride 2 mg Tablets	500	AMARYL®	Green, oval tablet, RDY/321	12
55111-322-01	Glimepiride 4 mg Tablets	100	AMARYL®	Blue, oval tablet, RDY/322	24
55111-322-05	Glimepiride 4 mg Tablets	500	AMARYL®	Blue, oval tablet, RDY/322	12



1 mg

2 mg

4 mg

Lamotrigine Tablets (chewable, dispersible) (AB Rated)

NDC#	PRODUCT DESCRIPTION	SIZE/CT	COMPARE TO	COLOR/SHAPE/MARKINGS	CASE PK
55111-225-01	Lamotrigine 5 mg Tablets (chewable, dispersible)	100	LAMICTAL® CT	White, round tablet, RDY/225	24
55111-226-01	Lamotrigine 25 mg Tablets (chewable, dispersible)	100	LAMICTAL® CT	White, capsule-shaped tablet, RDY/226	24



5 mg

25 mg

Lansoprazole Delayed-Release Capsules, USP (AB Rated)

NDC#	PRODUCT DESCRIPTION	SIZE/CT	COMPARE TO	COLOR/SHAPE/MARKINGS	CASE PK
55111-398-30	Lansoprazole 15 mg Delayed-Release Capsules	30	PREVACID®	Pink/green, capsule, RDY/398	24
55111-398-90	Lansoprazole 15 mg Delayed-Release Capsules	90	PREVACID®	Pink/green, capsule, RDY/398	24
55111-399-90	Lansoprazole 30 mg Delayed-Release Capsules	90	PREVACID®	Pink/black, capsule, RDY/399	24
55111-399-05	Lansoprazole 30 mg Delayed-Release Capsules	500	PREVACID®	Pink/black, capsule, RDY/399	12



Nateglinide Tablets (AB Rated)

NDC#	PRODUCT DESCRIPTION	SIZE/CT	COMPARE TO	COLOR/SHAPE/MARKINGS	CASE PK
55111-328-90	Nateglinide 60 mg Tablets	90	STARLIX®	White, round tablet, RDY/328	24
55111-329-90	Nateglinide 120 mg Tablets	90	STARLIX®	White, round tablet, RDY/329	24



Levetiracetam Tablets (AB Rated)

NDC#	PRODUCT DESCRIPTION	SIZE/CT	COMPARE TO	COLOR/SHAPE/MARKINGS	CASE PK
55111-181-04	Levetiracetam 250 mg Tablets	120	KEPPRA®	Beige, capsule-shaped tablet, RDY/181	12
55111-182-04	Levetiracetam 500 mg Tablets	120	KEPPRA®	Beige, capsule-shaped tablet, RDY/182	12
55111-183-04	Levetiracetam 750 mg Tablets	120	KEPPRA®	Beige, capsule-shaped tablet, RDY/183	12
55111-248-60	Levetiracetam 1000 mg Tablets	60	KEPPRA®	Beige, oval tablet, RDY/248	24



Nizatidine Capsules, USP (AB Rated)

NDC#	PRODUCT DESCRIPTION	SIZE/CT	COMPARE TO	COLOR/SHAPE/MARKINGS	CASE PK
55111-310-60	Nizatidine 150 mg Capsules	60	AXID®	Pink cap/yellow body, capsule, RDY/310	24
55111-310-05	Nizatidine 150 mg Capsules	500	AXID®	Pink cap/yellow body, capsule, RDY/310	12
55111-311-30	Nizatidine 300 mg Capsules	30	AXID®	Pink cap/white body, capsule, RDY/311	24



Levocetirizine Dihydrochloride Tablets (AB Rated)

NDC#	PRODUCT DESCRIPTION	SIZE/CT	COMPARE TO	COLOR/SHAPE/MARKINGS	CASE PK
55111-282-90	Levocetirizine Dihydrochloride 5 mg Tablets	90	XYZAL®	White, oval tablet, R5	24



Ofloxacin Tablets (AB Rated)

NDC#	PRODUCT DESCRIPTION	SIZE/CT	COMPARE TO	COLOR/SHAPE/MARKINGS	CASE PK
55111-160-50	Ofloxacin 200 mg Tablets	50	FLOXIN®	Yellow, capsule-shaped tablet, R/160	24
55111-161-50	Ofloxacin 300 mg Tablets	50	FLOXIN®	White, capsule-shaped tablet, R/161	24
55111-162-01	Ofloxacin 400 mg Tablets	100	FLOXIN®	Yellow, capsule-shaped tablet, R/162	24



Meprobamate Tablets, USP (AA Rated)

NDC#	PRODUCT DESCRIPTION	SIZE/CT	COMPARE TO	COLOR/SHAPE/MARKINGS	CASE PK
55111-640-01	Meprobamate 200 mg Tablets	100	MILTOWN®	White, round tablet, I7	24
55111-641-01	Meprobamate 400 mg Tablets	100	MILTOWN®	White, round tablet, I4	24



Omeprazole Delayed-Release Capsules, USP (AB Rated)

NDC#	PRODUCT DESCRIPTION	SIZE/CT	COMPARE TO	COLOR/SHAPE/MARKINGS	CASE PK
55111-157-30	Omeprazole 10 mg Delayed-Release Capsules	30	PRILOSEC®	Lavender cap/yellow body, capsule, Omeprazole 10 mg/R157	24
55111-157-01	Omeprazole 10 mg Delayed-Release Capsules	100	PRILOSEC®	Lavender cap/yellow body, capsule, Omeprazole 10 mg/R157	24
55111-158-30	Omeprazole 20 mg Delayed-Release Capsules	30	PRILOSEC®	Lavender cap/iron grey body, capsule, Omeprazole 20 mg/R158	24
55111-158-01	Omeprazole 20 mg Delayed-Release Capsules	100	PRILOSEC®	Lavender cap/iron grey body, capsule, Omeprazole 20 mg/R158	24
55111-158-10	Omeprazole 20 mg Delayed-Release Capsules	1000	PRILOSEC®	Lavender cap/iron grey body, capsule, Omeprazole 20 mg/R158	6
55111-159-30	Omeprazole 40 mg Delayed-Release Capsules	30	PRILOSEC®	Yellow cap/lavender body, capsule, Omeprazole 40 mg/R159	24
55111-159-01	Omeprazole 40 mg Delayed-Release Capsules	100	PRILOSEC®	Yellow cap/lavender body, capsule, Omeprazole 40 mg/R159	24
55111-159-05	Omeprazole 40 mg Delayed-Release Capsules	500	PRILOSEC®	Yellow cap/lavender body, capsule, Omeprazole 40 mg/R159	12



Minocycline Hydrochloride Tablets, USP (AB Rated)

NDC#	PRODUCT DESCRIPTION	SIZE/CT	COMPARE TO	COLOR/SHAPE/MARKINGS	CASE PK
55111-637-01	Minocycline Hydrochloride 50 mg Tablets	100	DYNACIN®	Yellow, round tablet, I 71	24
55111-638-01	Minocycline Hydrochloride 75 mg Tablets	100	DYNACIN®	Grey, round tablet, I 72	24
55111-639-60	Minocycline Hydrochloride 100 mg Tablets	60	DYNACIN®	Dark grey, round tablet, I 73	24



Ondansetron Hydrochloride Tablets (AB Rated)

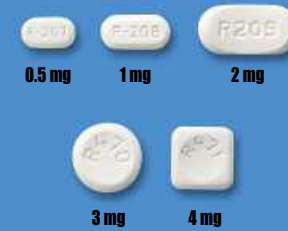
NDC#	PRODUCT DESCRIPTION	SIZE/CT	COMPARE TO	COLOR/SHAPE/MARKINGS	CASE PK
55111-153-13	Ondansetron Hydrochloride 4 mg Tablets	3	ZOFRAN®	White, round tablet, R/153	12
55111-153-30	Ondansetron Hydrochloride 4 mg Tablets	30	ZOFRAN®	White, round tablet, R/153	24
55111-154-13	Ondansetron Hydrochloride 8 mg Tablets	3	ZOFRAN®	Yellow, round tablet, R/154	12
55111-154-30	Ondansetron Hydrochloride 8 mg Tablets	30	ZOFRAN®	Yellow, round tablet, R/154	24



Noted products are the registered trademarks of their respective companies. Due to variations in photography, lighting and/or printing, actual color and size of product may vary slightly from picture. Information contained in this 2011 catalog is subject to change.

Oxaprozin Tablets (AB Rated)

NDC#	PRODUCT DESCRIPTION	SIZE/CT	COMPARE TO	COLOR/SHAPE/MARKINGS	CASE PK
55111-170-01	Oxaprozin 600 mg Tablets	100	DAYPRO®	Yellow, oval tablet, C/01 70	24
55111-170-05	Oxaprozin 600 mg Tablets	500	DAYPRO®	Yellow, oval tablet, C/01 70	12



Risperidone Orally Disintegrating Tablets (AB Rated)

NDC#	PRODUCT DESCRIPTION	SIZE/CT	COMPARE TO	COLOR/SHAPE/MARKINGS	CASE PK
55111-207-81	Risperidone 0.5 mg Orally Disintegrating Tablets	30	RISPERDAL M-TAB®	White, capsule-shaped tablet, R-207	14
55111-208-81	Risperidone 1 mg Orally Disintegrating Tablets	30	RISPERDAL M-TAB®	White, capsule-shaped tablet, P-208	14
55111-209-81	Risperidone 2 mg Orally Disintegrating Tablets	30	RISPERDAL M-TAB®	White, capsule-shaped tablet, R209	12
55111-470-81	Risperidone 3 mg Orally Disintegrating Tablets	30	RISPERDAL M-TAB®	White, round tablet, R470	12
55111-471-81	Risperidone 4 mg Orally Disintegrating Tablets	30	RISPERDAL M-TAB®	White, square tablet, R471	12

Pantoprazole Sodium Delayed-Release Tablets, USP (AB Rated)

NDC#	PRODUCT DESCRIPTION	SIZE/CT	COMPARE TO	COLOR/SHAPE/MARKINGS	CASE PK
55111-332-90	Pantoprazole Sodium 20 mg Delayed-Release Tablets	90	PROTONIX®	Yellow, round tablet, R332	24
55111-333-90	Pantoprazole Sodium 40 mg Delayed-Release Tablets	90	PROTONIX®	Yellow, round tablet, R333	24



Risperidone Oral Solution (AA Rated)

NDC#	PRODUCT DESCRIPTION	SIZE/CT	COMPARE TO	COLOR/SHAPE/MARKINGS	CASE PK
55111-579-30	Risperidone 1 mg/mL Oral Solution (1 oz)	30 mL	RISPERDAL®	Clear solution	24

Pravastatin Sodium Tablets (AB Rated)

NDC#	PRODUCT DESCRIPTION	SIZE/CT	COMPARE TO	COLOR/SHAPE/MARKINGS	CASE PK
55111-229-90	Pravastatin Sodium 10 mg Tablets	90	PRAVACHOL®	White, round tablet, RDY/229	24
55111-229-05	Pravastatin Sodium 10 mg Tablets	500	PRAVACHOL®	White, round tablet, RDY/229	12
55111-230-90	Pravastatin Sodium 20 mg Tablets	90	PRAVACHOL®	White, round tablet, RDY/230	24
55111-230-05	Pravastatin Sodium 20 mg Tablets	500	PRAVACHOL®	White, round tablet, RDY/230	12
55111-231-90	Pravastatin Sodium 40 mg Tablets	90	PRAVACHOL®	White, round tablet, RDY/231	24
55111-231-05	Pravastatin Sodium 40 mg Tablets	500	PRAVACHOL®	White, round tablet, RDY/231	12
55111-274-90	Pravastatin Sodium 80 mg Tablets	90	PRAVACHOL®	White, oval tablet, RDY/274	24
55111-274-05	Pravastatin Sodium 80 mg Tablets	500	PRAVACHOL®	White, oval tablet, RDY/274	12



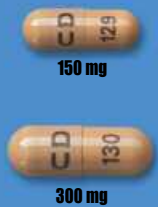
Simvastatin Tablets, USP (AB Rated)

NDC#	PRODUCT DESCRIPTION	SIZE/CT	COMPARE TO	COLOR/SHAPE/MARKINGS	CASE PK
55111-197-30	Simvastatin 5 mg Tablets	30	ZOCOR®	Brown, round tablet, RDY/197	24
55111-197-90	Simvastatin 5 mg Tablets	90	ZOCOR®	Brown, round tablet, RDY/197	24
55111-198-30	Simvastatin 10 mg Tablets	30	ZOCOR®	Brown, round tablet, RDY/198	24
55111-198-90	Simvastatin 10 mg Tablets	90	ZOCOR®	Brown, round tablet, RDY/198	24
55111-198-05	Simvastatin 10 mg Tablets	500	ZOCOR®	Brown, round tablet, RDY/198	12
55111-199-90	Simvastatin 20 mg Tablets	90	ZOCOR®	Brown, round tablet, RDY/199	24
55111-199-05	Simvastatin 20 mg Tablets	500	ZOCOR®	Brown, round tablet, RDY/199	12
55111-199-10	Simvastatin 20 mg Tablets	1000	ZOCOR®	Brown, round tablet, RDY/199	6
55111-200-90	Simvastatin 40 mg Tablets	90	ZOCOR®	Brown, round tablet, RDY/200	24
55111-200-05	Simvastatin 40 mg Tablets	500	ZOCOR®	Brown, round tablet, RDY/200	12
55111-200-10	Simvastatin 40 mg Tablets	1000	ZOCOR®	Brown, round tablet, RDY/200	6
55111-268-30	Simvastatin 80 mg Tablets	30	ZOCOR®	Brown, oval tablet, RDY/268	24
55111-268-90	Simvastatin 80 mg Tablets	90	ZOCOR®	Brown, oval tablet, RDY/268	24
55111-268-05	Simvastatin 80 mg Tablets	500	ZOCOR®	Brown, oval tablet, RDY/268	12



Ranitidine Hydrochloride Capsules (AB Rated)

NDC#	PRODUCT DESCRIPTION	SIZE/CT	COMPARE TO	COLOR/SHAPE/MARKINGS	CASE PK
55111-129-60	Ranitidine Hydrochloride 150 mg Capsules	60	ZANTAC®	Light brown, capsule, CD/129	24
55111-129-05	Ranitidine Hydrochloride 150 mg Capsules	500	ZANTAC®	Light brown, capsule, CD/129	12
55111-130-30	Ranitidine Hydrochloride 300 mg Capsules	30	ZANTAC®	Light brown, capsule, CD/130	24
55111-130-01	Ranitidine Hydrochloride 300 mg Capsules	100	ZANTAC®	Light brown, capsule, CD/130	24



Ranitidine Syrup (Ranitidine Oral Solution, USP) (AA Rated)

NDC#	PRODUCT DESCRIPTION	SIZE/CT	COMPARE TO	COLOR/SHAPE/MARKINGS	CASE PK
55111-602-16	Ranitidine Syrup (Ranitidine Oral Solution) 15 mg/mL Syrup (16 oz)	473 mL	ZANTAC®	Clear pale yellow, syrup	12



Sumatriptan Succinate Tablets (AB Rated)

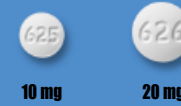
NDC#	PRODUCT DESCRIPTION	SIZE/CT	COMPARE TO	COLOR/SHAPE/MARKINGS	CASE PK
55111-291-09	Sumatriptan Succinate 25 mg Tablets	9	IMITREX®	White, round tablet, RDY/291	24
55111-291-36	Sumatriptan Succinate 25 mg Tablets	36	IMITREX®	White, round tablet, RDY/291	24
55111-292-09	Sumatriptan Succinate 50 mg Tablets	9	IMITREX®	White, round tablet, RDY/292	24
55111-292-36	Sumatriptan Succinate 50 mg Tablets	36	IMITREX®	White, round tablet, RDY/292	24
55111-293-09	Sumatriptan Succinate 100 mg Tablets	9	IMITREX®	White, capsule-shaped tablet, RDY/293	24
55111-293-36	Sumatriptan Succinate 100 mg Tablets	36	IMITREX®	White, capsule-shaped tablet, RDY/293	24





Tacrolimus Capsules (AB Rated)

NDC#	PRODUCT DESCRIPTION	SIZE/CT	COMPARE TO	COLOR/SHAPE/MARKINGS	CASE PK
55111-525-01	Tacrolimus 0.5 mg Capsules	100	PROGRAF®	Dark yellow, capsule, 0.5MG/RDY/525	24
55111-526-01	Tacrolimus 1 mg Capsules	100	PROGRAF®	White, capsule, 1MG/RDY/526	24
55111-527-01	Tacrolimus 5 mg Capsules	100	PROGRAF®	Dark red, capsule, 5MG/RDY/527	24



Zafirlukast Tablets (AB Rated)

NDC#	PRODUCT DESCRIPTION	SIZE/CT	COMPARE TO	COLOR/SHAPE/MARKINGS	CASE PK
55111-625-60	Zafirlukast 10 mg Tablets	60	ACCOLATE®	White to light pink, round, R/625	24
55111-626-60	Zafirlukast 20 mg Tablets	60	ACCOLATE®	White to light pink, round, R/626	24



Terbinafine Hydrochloride Tablets (AB Rated)

NDC#	PRODUCT DESCRIPTION	SIZE/CT	COMPARE TO	COLOR/SHAPE/MARKINGS	CASE PK
55111-250-30	Terbinafine Hydrochloride 250 mg Tablets	30	LAMISIL®	White, round tablet, RDY/250	24
55111-250-90	Terbinafine Hydrochloride 250 mg Tablets	90	LAMISIL®	White, round tablet, RDY/250	24



Tizanidine Hydrochloride Tablets, USP (AB Rated)

NDC#	PRODUCT DESCRIPTION	SIZE/CT	COMPARE TO	COLOR/SHAPE/MARKINGS	CASE PK
55111-179-15	Tizanidine Hydrochloride 2 mg Tablets	150	ZANAFLEX®	White, oval tablet, P179	12
55111-179-10	Tizanidine Hydrochloride 2 mg Tablets	1000	ZANAFLEX®	White, oval tablet, P179	6
55111-180-15	Tizanidine Hydrochloride 4 mg Tablets	150	ZANAFLEX®	White, oval tablet, P180	12
55111-180-10	Tizanidine Hydrochloride 4 mg Tablets	1000	ZANAFLEX®	White, oval tablet, P180	6



Valacyclovir Hydrochloride Tablets (AB Rated)

NDC#	PRODUCT DESCRIPTION	SIZE/CT	COMPARE TO	COLOR/SHAPE/MARKINGS	CASE PK
55111-552-30	Valacyclovir Hydrochloride 500 mg Tablets	30	VALTRESX®	Blue, capsule shaped, RDY/552	24
55111-552-90	Valacyclovir Hydrochloride 500 mg Tablets	90	VALTRESX®	Blue, capsule shaped, RDY/552	24
55111-552-05	Valacyclovir Hydrochloride 500 mg Tablets	500	VALTRESX®	Blue, capsule shaped, RDY/552	12
55111-553-30	Valacyclovir Hydrochloride 1 g Tablets	30	VALTRESX®	Blue, capsule shaped, RDY/553	24
55111-553-90	Valacyclovir Hydrochloride 1 g Tablets	90	VALTRESX®	Blue, capsule shaped, RDY/553	24
55111-553-05	Valacyclovir Hydrochloride 1 g Tablets	500	VALTRESX®	Blue, capsule shaped, RDY/553	12



Venlafaxine Hydrochloride Tablets (AB Rated)

NDC#	PRODUCT DESCRIPTION	SIZE/CT	COMPARE TO	COLOR/SHAPE/MARKINGS	CASE PK
55111-545-90	Venlafaxine Hydrochloride 25 mg Tablets	90	EFFEXOR®	Peach, round tablet, RDY/545	24
55111-546-90	Venlafaxine Hydrochloride 37.5 mg Tablets	90	EFFEXOR®	Peach, round tablet, RDY/546	24
55111-547-90	Venlafaxine Hydrochloride 50 mg Tablets	90	EFFEXOR®	Peach, round tablet, RDY/547	24
55111-548-90	Venlafaxine Hydrochloride 75 mg Tablets	90	EFFEXOR®	Peach, round tablet, RDY/548	24
55111-549-90	Venlafaxine Hydrochloride 100 mg Tablets	90	EFFEXOR®	Peach, round tablet, RDY/549	24

Effective: MAY 1, 2009

Authorization of Returns

PROCEDURE FOR RETURNING MERCHANDISE
Unless otherwise required by law

Direct Accounts:

Please contact Inmar CLS MedTurn Pharmaceutical Services Customer Service Returns Department at 800-967-5952 or rarequest@inmar.com for authorization to return product. All material should be returned in an appropriate and secure package.

Short-Dated and Expired Items

Items with dating six months or less prior to and not more than one year after expiration date must be returned to Inmar CLS MedTurn Pharmaceutical Services at the following address:

Dr. Reddy's Laboratories, Inc.
c/o Inmar CLS MedTurn Pharmaceutical Services
4332 Empire Rd.
Fort Worth, TX 76155
Telephone: 800-967-5952
Fax: 817-868-5343

Items Ordered or Shipped in Error or Damaged in Transit

Inmar CLS MedTurn Pharmaceutical Services will not accept returns of items ordered or shipped in error or damaged in transit. Please contact Dr. Reddy's at 1-866-733-3952 for authorization and further instruction on these returns.

Third-Party Customers (Indirect accounts):

Please contact Inmar CLS MedTurn Pharmaceutical Services Customer Service Department at 800-967-5952 or rarequest@inmar.com for authorization to return product.

Products Eligible for Return to Inmar CLS MedTurn Pharmaceutical Services

- Expired products within one year after date of expiration. The term "expired" includes products within six (6) months of expiration. Credit is contingent upon satisfaction of the following conditions:
 - Return good authorization was issued by Inmar CLS MedTurn Pharmaceutical Services and product was returned within 30 days of authorization of return.
 - Products in original containers.
 - Written proof of purchase.
- All returns must be shipped prepaid and are subject to final count by Dr. Reddy's Inmar CLS MedTurn.

Disposition of Returns

Full Bottles –

- Eligible returns of full bottles *must* be sent to Inmar CLS MedTurn Pharmaceutical Services.

Partials –

- Eligible returns of partial bottles *must* be sent to Inmar CLS MedTurn Pharmaceutical Services.

Non Creditable Goods

Products may be returned for reasons below, however, credit will not be issued.

- Products beyond one (1) year of expiration
- Overstock or products which are considered in date
- Products involved in a sacrifice, fire or bankruptcy sale
- Products damaged due to fire, flood or other catastrophe
- Products sold expressly on a non-refundable basis
- Products from which labels have been removed or defaced
- Product for which proof of purchase cannot be verified
- Samples or "no charge" introductory items
- Products purchased or distributed contrary to federal, state or local law or Dr. Reddy's sales policy

Credit of Returns

- For direct customers, credit will be calculated at the lower of the original invoice price, current contract price or prevailing published list price. Dr. Reddy's reserves the right to make the final determination.
- For direct customers returning non-contract product purchased indirectly, credit will be given at a calculated average contract price or prevailing list price. Dr. Reddy's reserves the right to make the final determination.
- For third party customers, a check will be mailed and the return will be credited at a calculated average contract price. Dr. Reddy's reserves the right to make the final determination.
- Partials will be accepted and credited for the exact quantity returned.
- Shipping charges are to be prepaid by the customer.
- Dr. Reddy's is not responsible for any other additional fees from its customers using third-party processor.

Transportation Charges

Customer will be responsible for all transportation charges for all returned items. Dr. Reddy's will be responsible for transportation charges in the event of a shipping error or item recall only.

Customer Service Telephone	866-733-3952
Customer Service Fax	866-733-3939
EDI Information	318-861-8187
Contracts & Rebates Telephone	908-203-4900
Contracts & Rebates Fax	908-203-4970
Orders & Distribution	866-733-3952
Returns (Inmar CLS MedTurn Pharmaceutical Services)	800-967-5952
Medical Information Medical Information Inquiries Product Complaint Inquiries Drug Safety (adverse event) Inquiries Toll Free (9 am – 7 pm EST)	888-375-3784
E-mail	medinfo@drreddys.com

2011 NORTH AMERICAN GENERICS Product Catalog

Dr. Reddy's Laboratories, Inc.
200 Somerset Corporate Blvd., Building II, 7th Floor
Bridgewater, NJ 08807
Tel: 866-733-3952

www.drreddys.com ©2011 Dr. Reddy's Laboratories, Inc. All rights reserved.

RDY2182011165845

March 2011

